

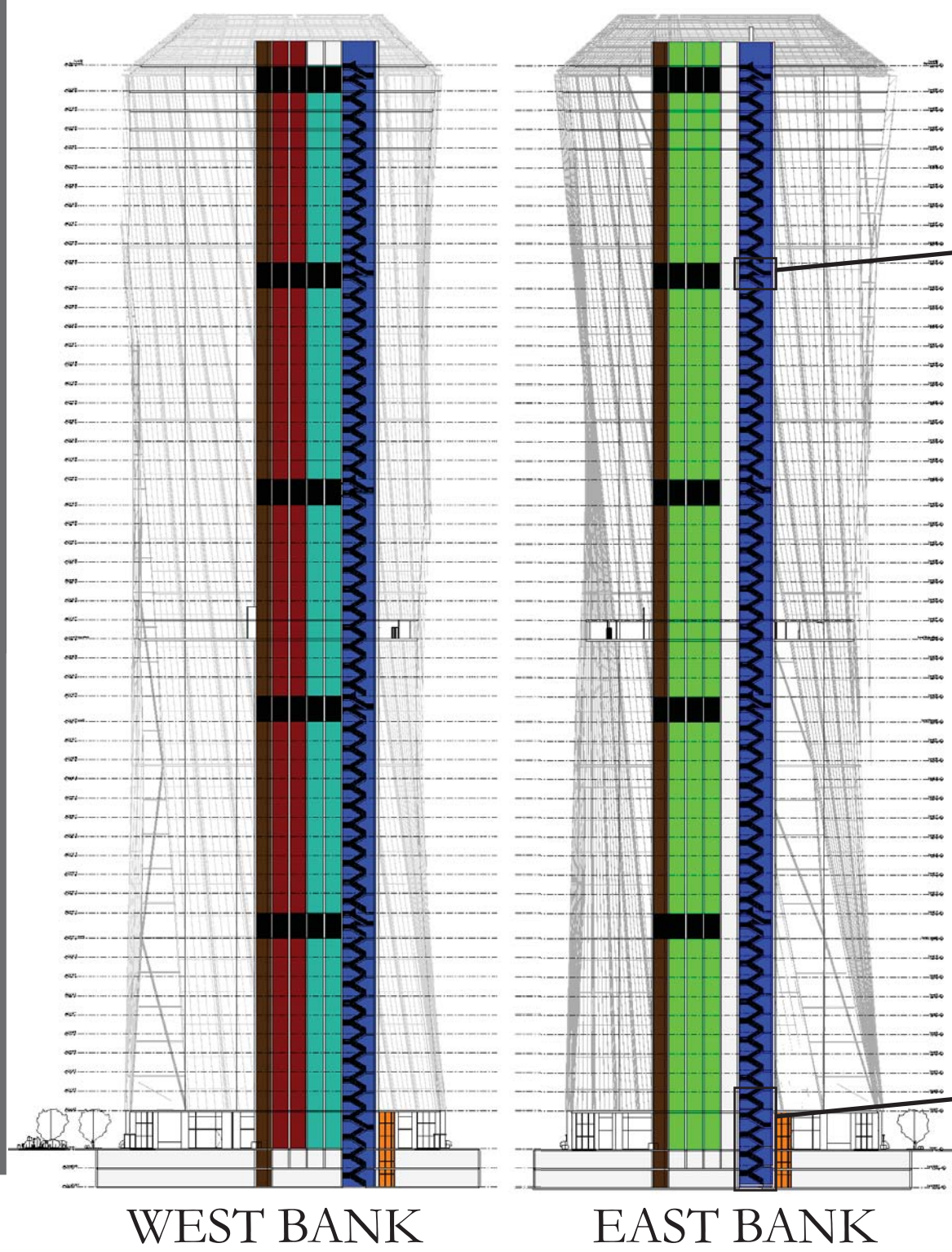
BBC-Tower

1-BLACKFRIARS RD. LONDON

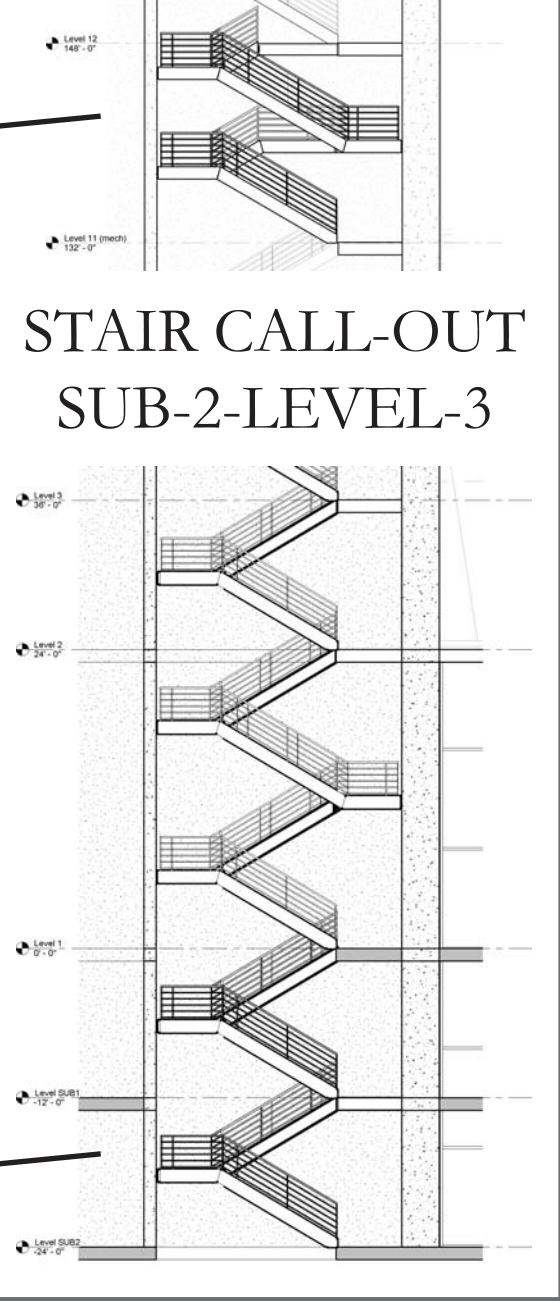
KEY

- ELEVATOR WEST BANK**
- SERVICE ELEVATOR
- EXPRESS ELEVATOR
- RESTAURNT
- EXPRESS ELEVATOR
- SKY LOBBY
- STAIRS
- MECHANICAL/ SKY LOBBY
- PARKING ELEVATORS
- ELEVATOR EAST BANK**
- SERVICE ELEVATOR
- LOCAL ELEVATORS (STACKED)
- STAIRS
- MECHANICAL/ SKY LOBBY
- PARKING ELEVATORS

ELEVATOR SCHEMATIC

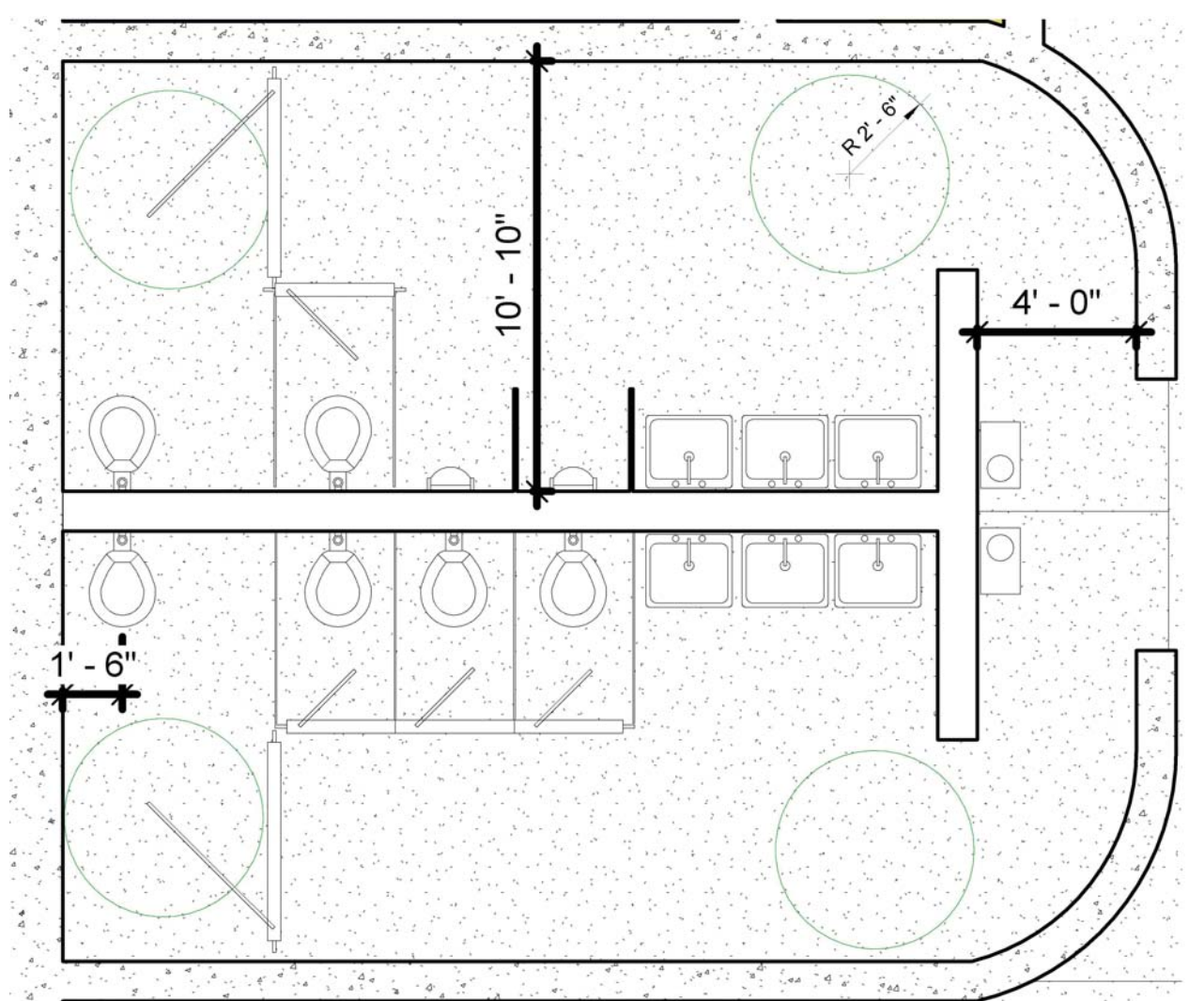


STAIR CALL-OUT MECHANICAL



BATHROOM CALL OUT - FLOOR 1

SCALE 1/4"=1'-0"



-Table 1004.1.2

-Business areas: 100 gross

-Plumbing Fixtures

-Table: 403.1

-Business areas

-419.2 Urinals shall not be substituted for more than 50% of the required water closets

CODES UTILIZED -2012 | IPC

Gross 1st floor area=	33900		
Occupant factor	100		
=33900/100	339	Occupants	

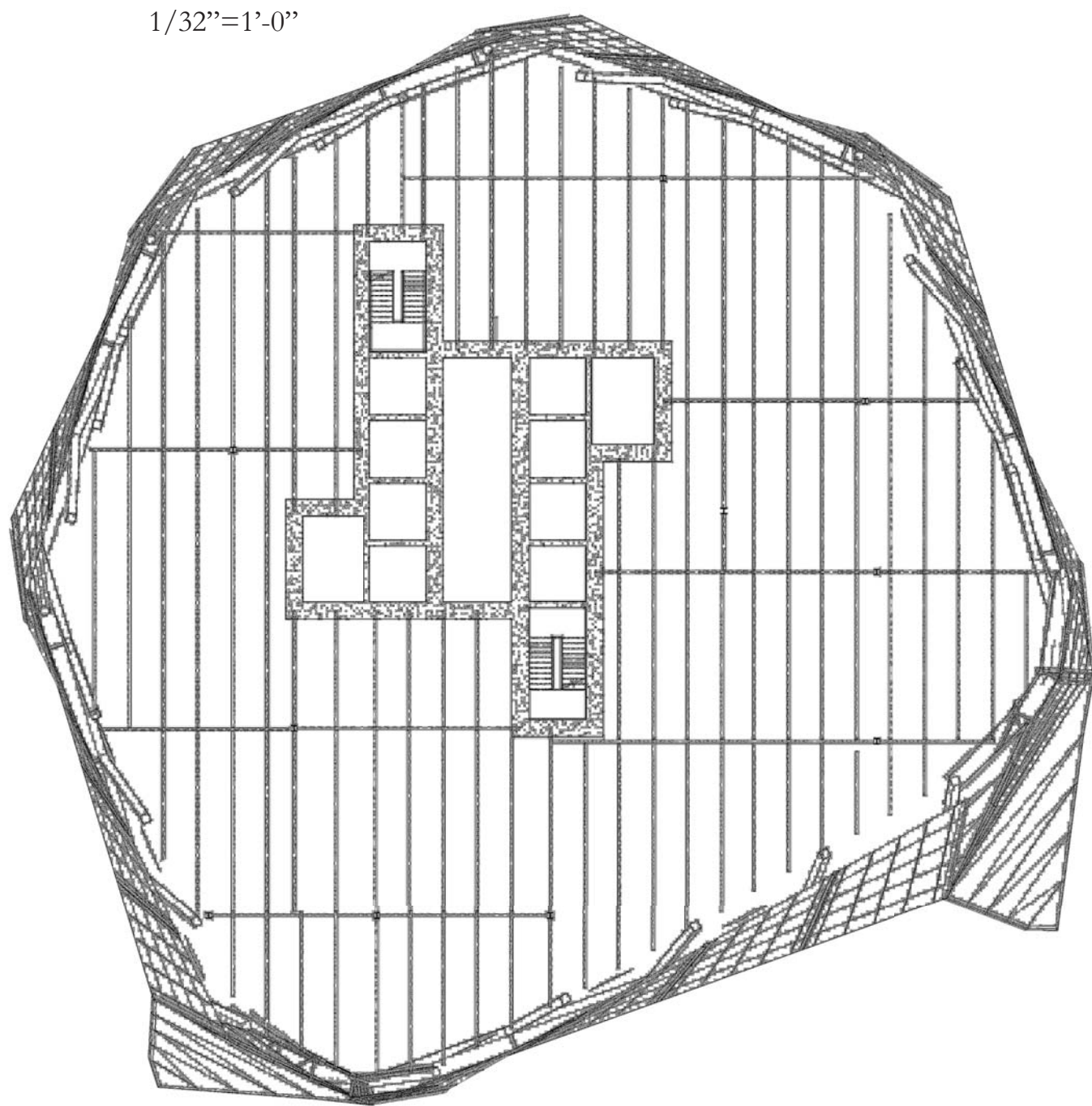
		Male	Female
	339 occupants * 2/3	226	226
Water Closets	(M&F) 1/25 for first 50 then 1/50	6	6
Lavatories	(M&F) 1/40 for first 80 then 1/80	4	4
Drinking Fountain	1 / 100	3	
Other	Service sink	1	

- 1005.3.1 Stairways (.3" per occupant) with exception for automatic sprinklers systems throughout then (.15" per occupant)
- Stairways = 4.2'
- 1007.6-Area refuge 30" by 48"
- 1009.8 Landings shall not be less than width of stairways
- 1015.2.1

CODES UTILIZED -2012 | IBC

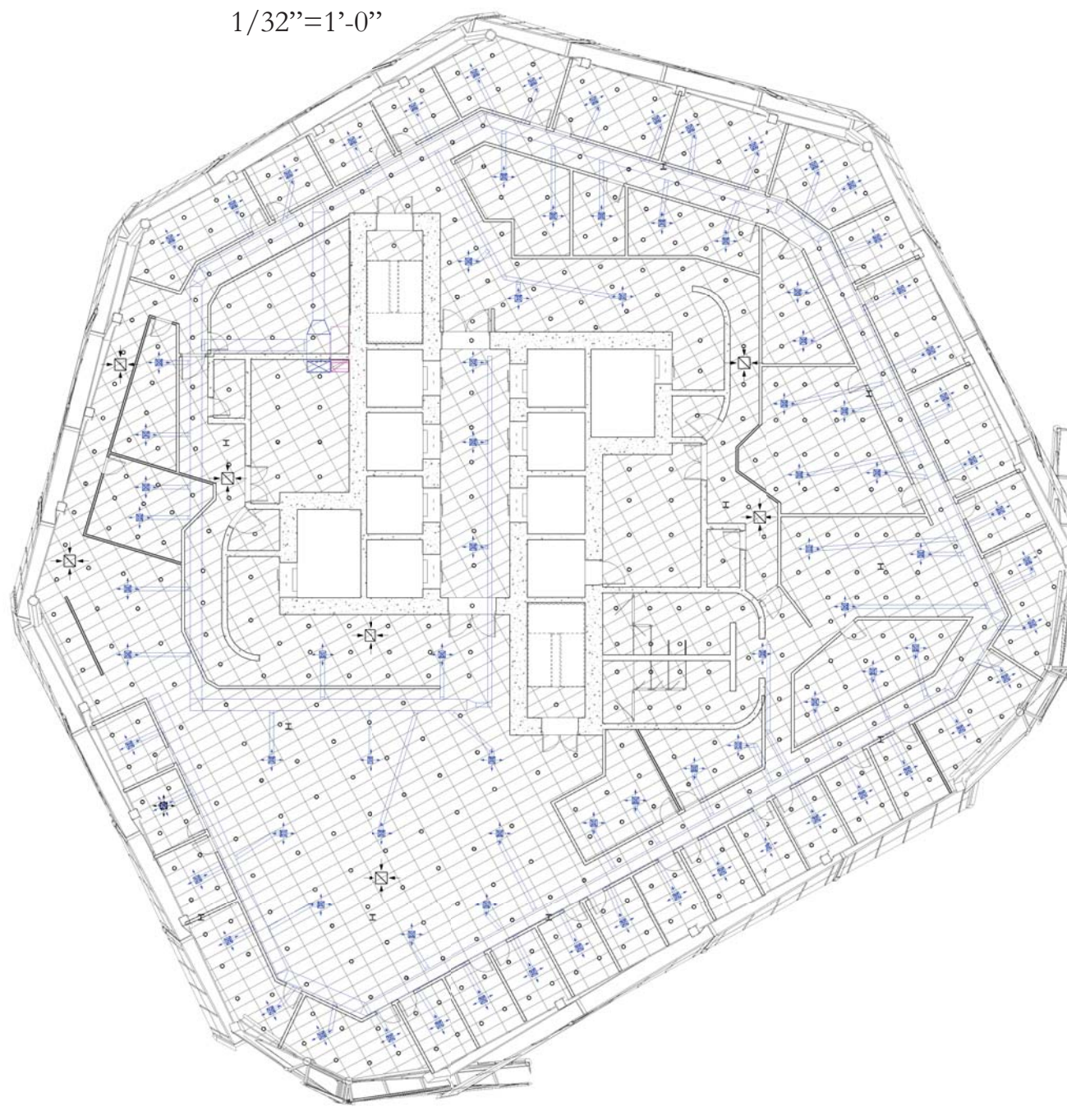
-Where two exits or exit access door ways are required from any portion of the exit access the exit doors or exit access doorways shall be placed a distance apart of equal to not less than one half of the length of the maximum overall diagonal dimension of the building
Exception- 1/3 length of overall dimension for automatic sprinkler system and fire rated exit

SCALE 1/32"=1'-0"



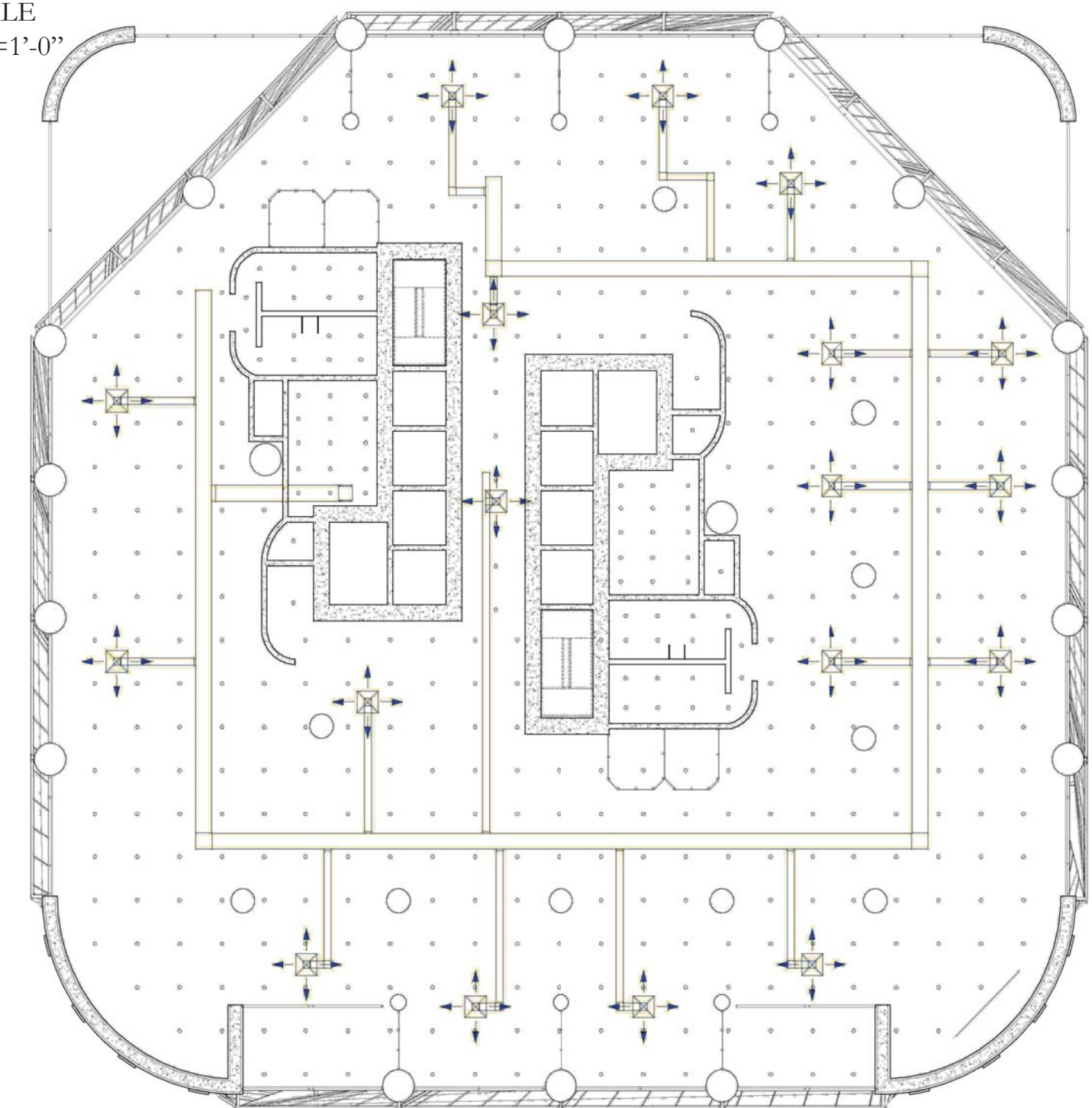
TYPICAL OFFICE FRAMING PLAN

SCALE 1/32"=1'-0"



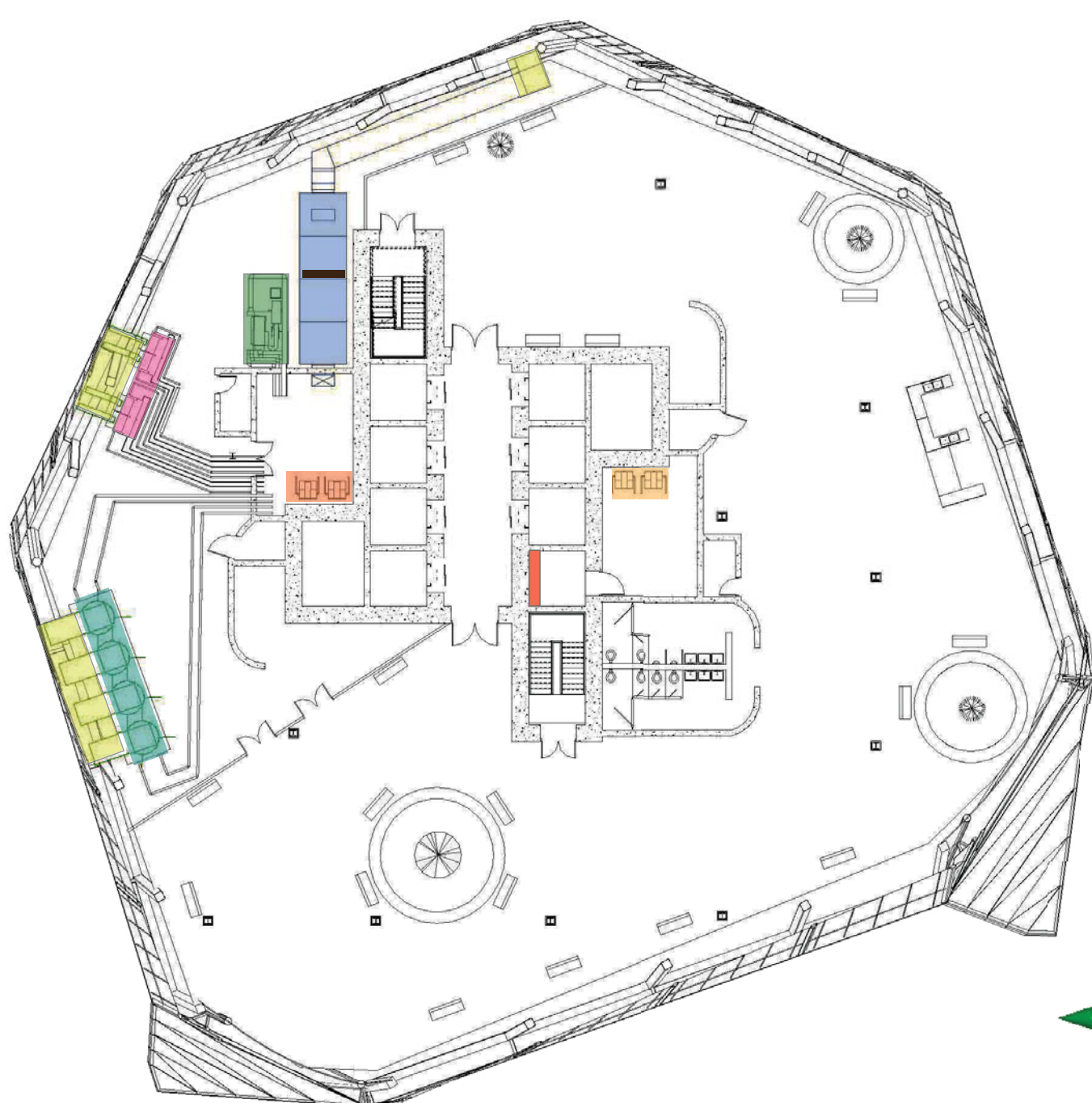
TYPICAL OFFICE CEILING PLAN

SCALE 1/32"=1'-0"



FIRST FLOOR CEILING PLAN

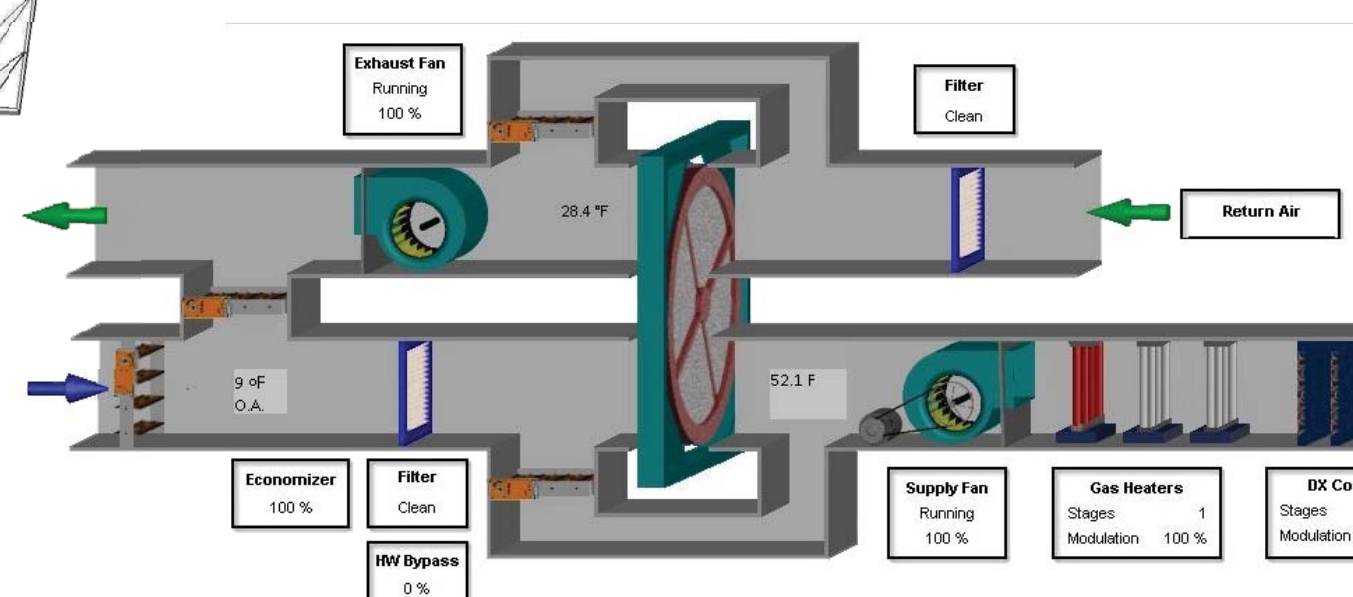
SCALE 1/32"=1'-0"



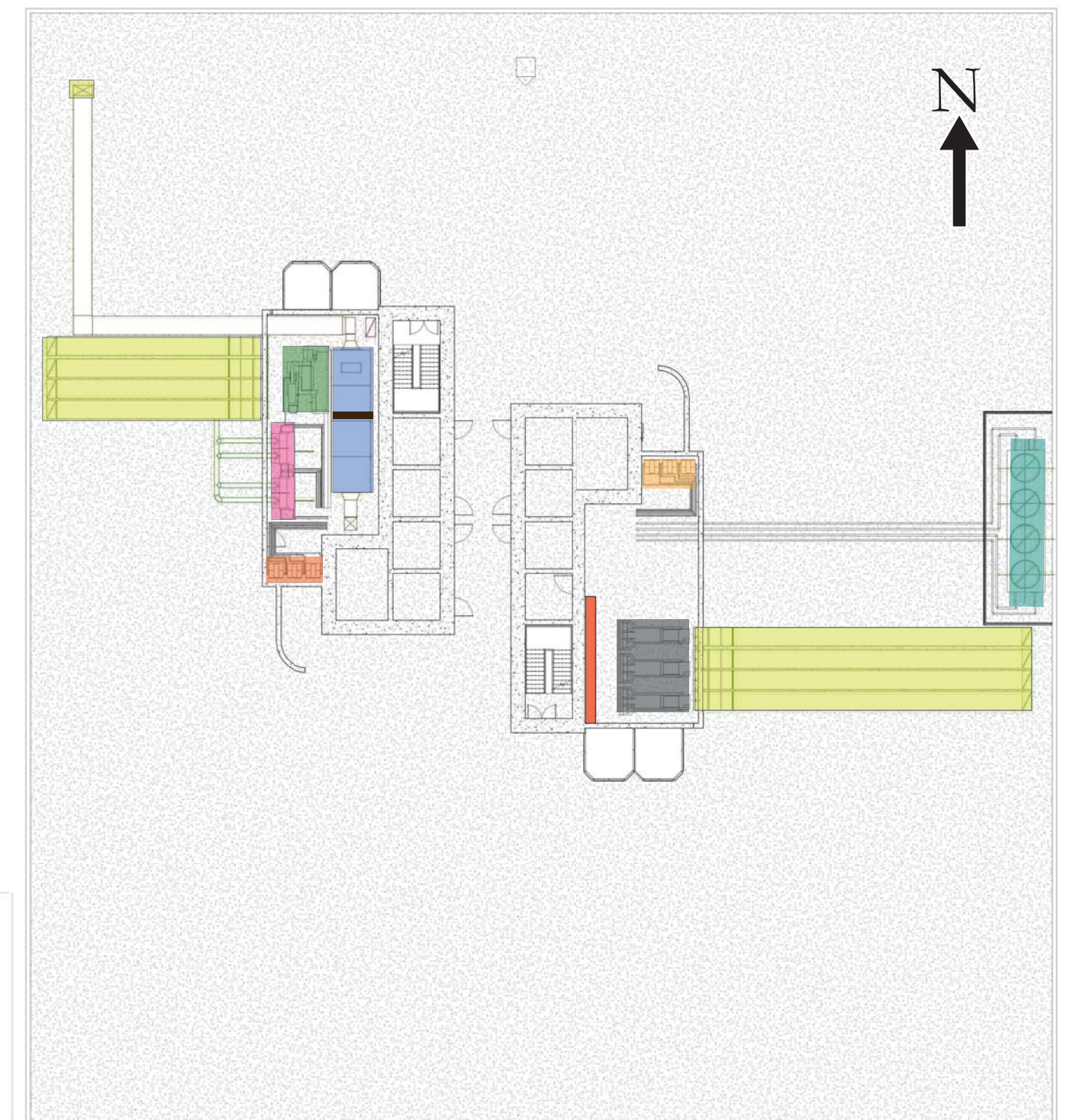
TYPICAL MECHANICAL FLOOR

- AIR HANDLING UNITS
- CHILLERS
- COOLING TOWERS
- HYDRONIC BOILER
- DOMESTIC BOILER
- PUMPS
- FIRE PUMPS
- MAIN SWITCH GEAR
- EMERGENCY GENERATORS
- MECHANICAL EXHAUST/LOUVERS

HEAT RECOVERY WHEEL



SCALE 1/32"=1'-0"



SUB-1 MECHANICAL FLOOR